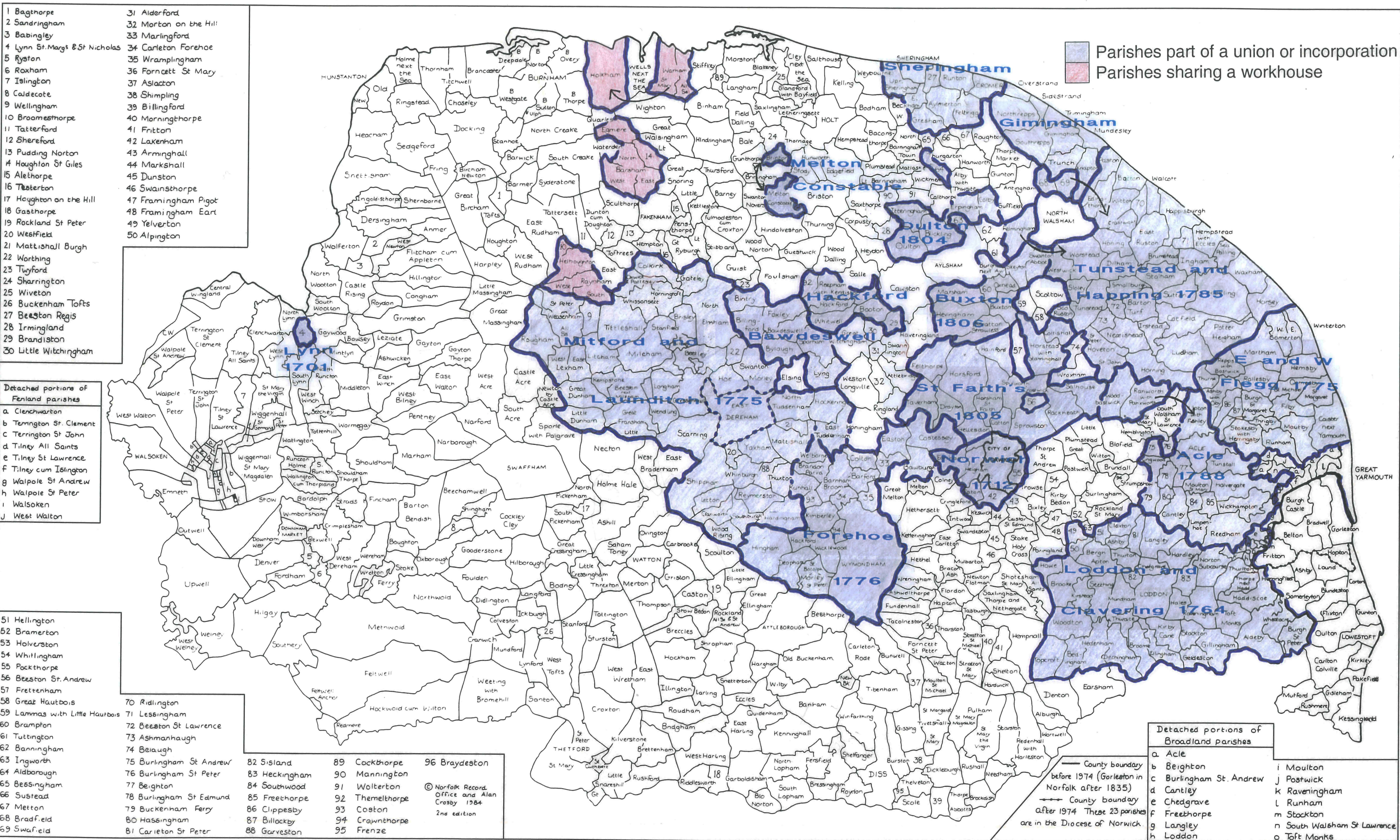


Poor Law Unions and Incorporations before 1834



- 1 Bagthorpe
- 2 Sandringham
- 3 Babingley
- 4 Lynn St. Margs & St Nicholas
- 5 Ryston
- 6 Roxham
- 7 Islington
- 8 Caldecote
- 9 Wellingham
- 10 Broomesthorpe
- 11 Tatterford
- 12 Shereford
- 13 Pudding Norton
- 14 Houghton St Giles
- 15 Alethorpe
- 16 Testerton
- 17 Houghton on the Hill
- 18 Gasthorpe
- 19 Rockland St Peter
- 20 Westfield
- 21 Mattishall Burgh
- 22 Worthing
- 23 Twyford
- 24 Sharrington
- 25 Wiveton
- 26 Buckenham Tofts
- 27 Beeston Regis
- 28 Irmingland
- 29 Brandiston
- 30 Little Witchingham
- 31 Alderford
- 32 Morton on the Hill
- 33 Marlingford
- 34 Carleton Forehoe
- 35 Wrampingham
- 36 Fornett St Mary
- 37 Aslacton
- 38 Shimpling
- 39 Billingford
- 40 Morningthorpe
- 41 Fritton
- 42 Lakenham
- 43 Arminghall
- 44 Markshall
- 45 Dunston
- 46 Swainsthorpe
- 47 Framingham Pigot
- 48 Framingham East
- 49 Yelverton
- 50 Alington

- Detached portions of Fenland parishes**
- a. Clenchwanton
 - b. Terrington St. Clement
 - c. Terrington St John
 - d. Tilney All Saints
 - e. Tilney St Lawrence
 - f. Tilney cum Islington
 - g. Walpole St Andrew
 - h. Walpole St Peter
 - i. Walsoken
 - j. West Walton

- 51 Hellington
- 52 Bramerton
- 53 Holverston
- 54 Whittingham
- 55 Pockthorpe
- 56 Beeston St. Andrew
- 57 Frettenham
- 58 Great Hautbois
- 59 Lammas with Little Hautbois
- 60 Brampton
- 61 Tuttington
- 62 Banningham
- 63 Ingworth
- 64 Aldborough
- 65 Bessingham
- 66 Sustead
- 67 Metton
- 68 Bradfield
- 69 Swafield
- 70 Ridlington
- 71 Lessingham
- 72 Beeston St Lawrence
- 73 Ashmanhaugh
- 74 Beilaugh
- 75 Burlingham St Andrew
- 76 Burlingham St Peter
- 77 Beighton
- 78 Burlingham St Edmund
- 79 Buckenham Ferry
- 80 Hassingham
- 81 Carleton St Peter
- 82 Sisland
- 83 Heckingham
- 84 Southwood
- 85 Freethorpe
- 86 Clippesby
- 87 Billockby
- 88 Garveston
- 89 Cockthorpe
- 90 Mannington
- 91 Wolterton
- 92 Themelthorpe
- 93 Coston
- 94 Crownthorpe
- 95 Frenze
- 96 Braydeston

- Detached portions of Broadland parishes**
- a. Acle
 - b. Beighton
 - c. Burlingham St. Andrew
 - d. Cantley
 - e. Chedgrave
 - f. Freehorpe
 - g. Langley
 - h. Loddon
 - i. Moulton
 - j. Postwick
 - k. Raveningham
 - l. Runham
 - m. Stockton
 - n. South Walsham St Lawrence
 - o. Toft Monks

© Norfolk Record Office and Alan Crosby 1984
 2nd edition

East Dereham: part of Mitford and Launditch until 1801, when the town separated from the incorporation