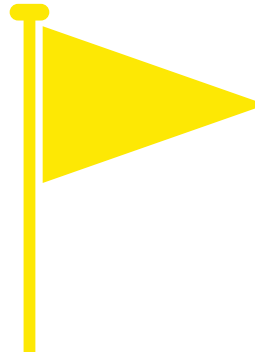
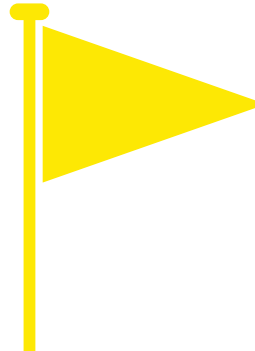
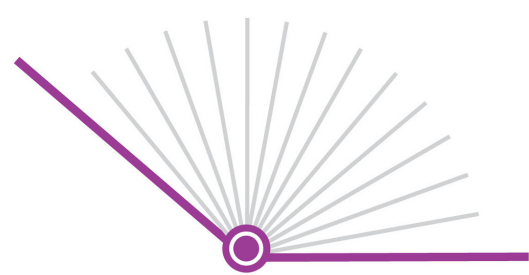


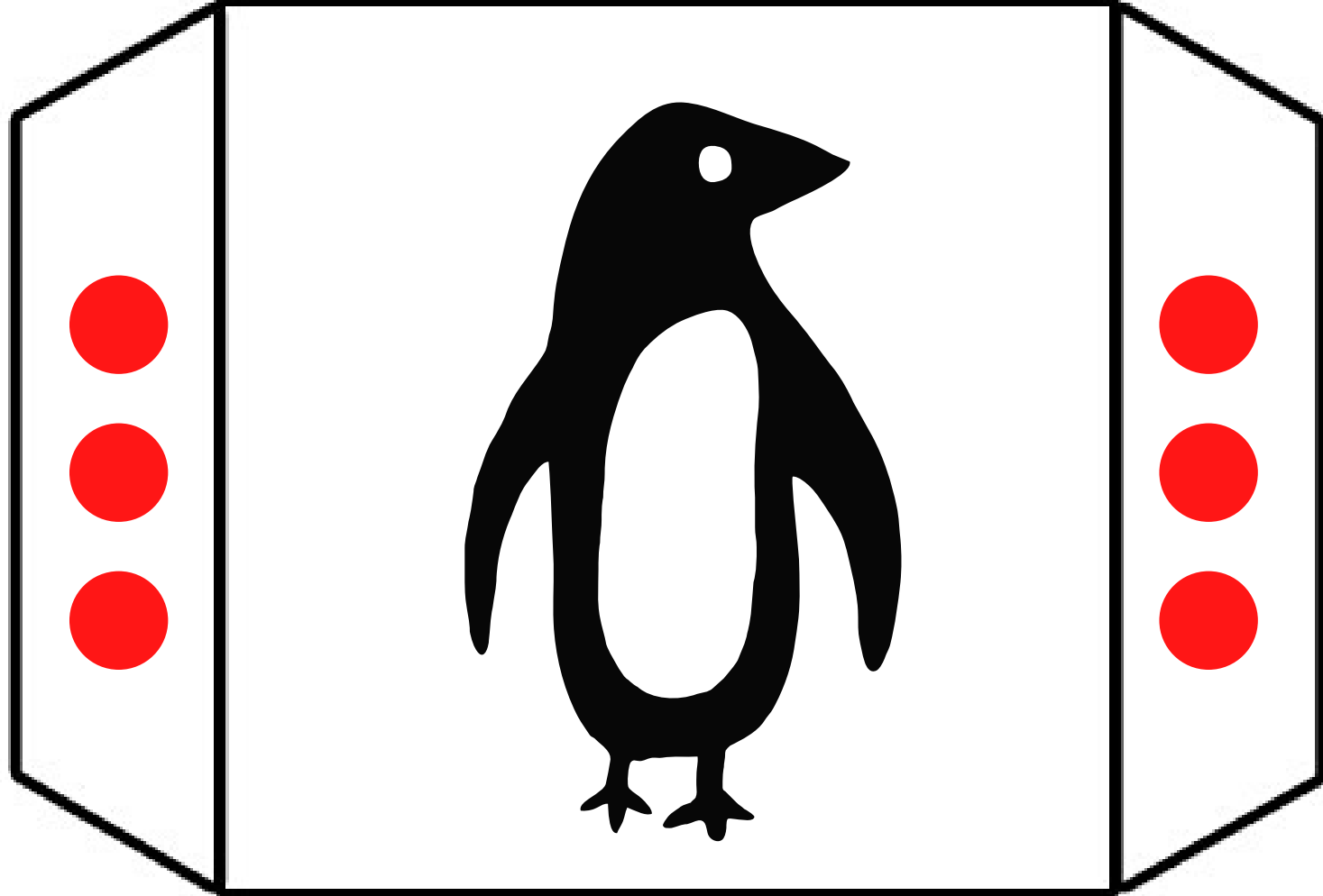
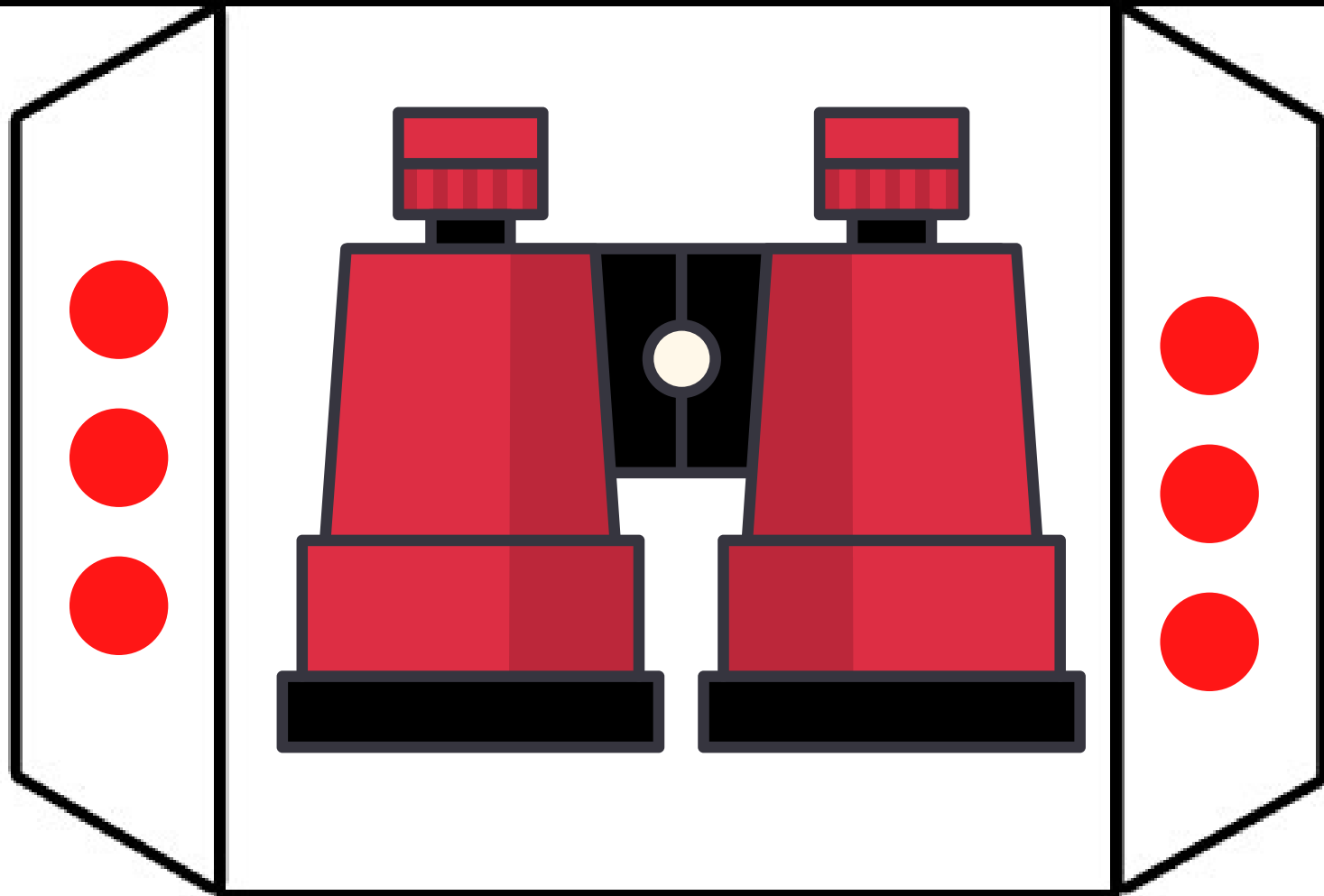
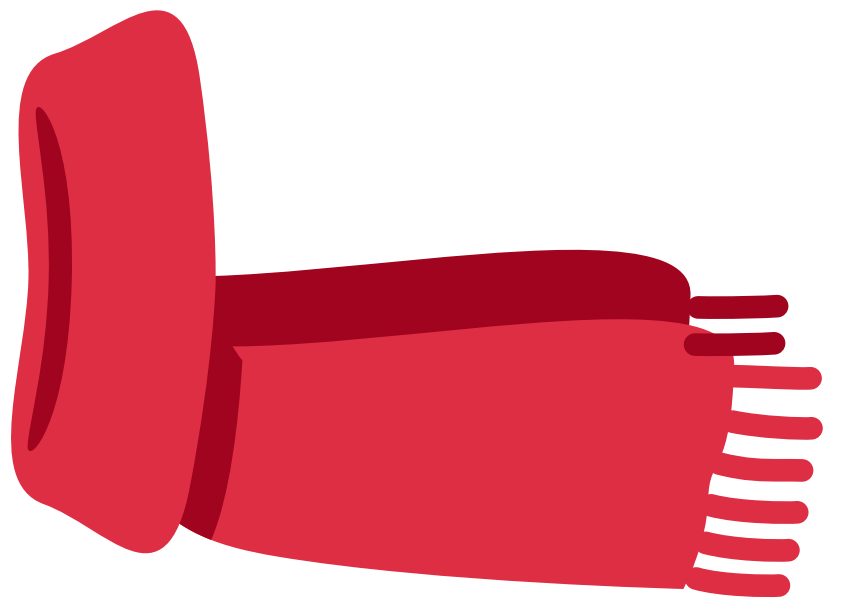
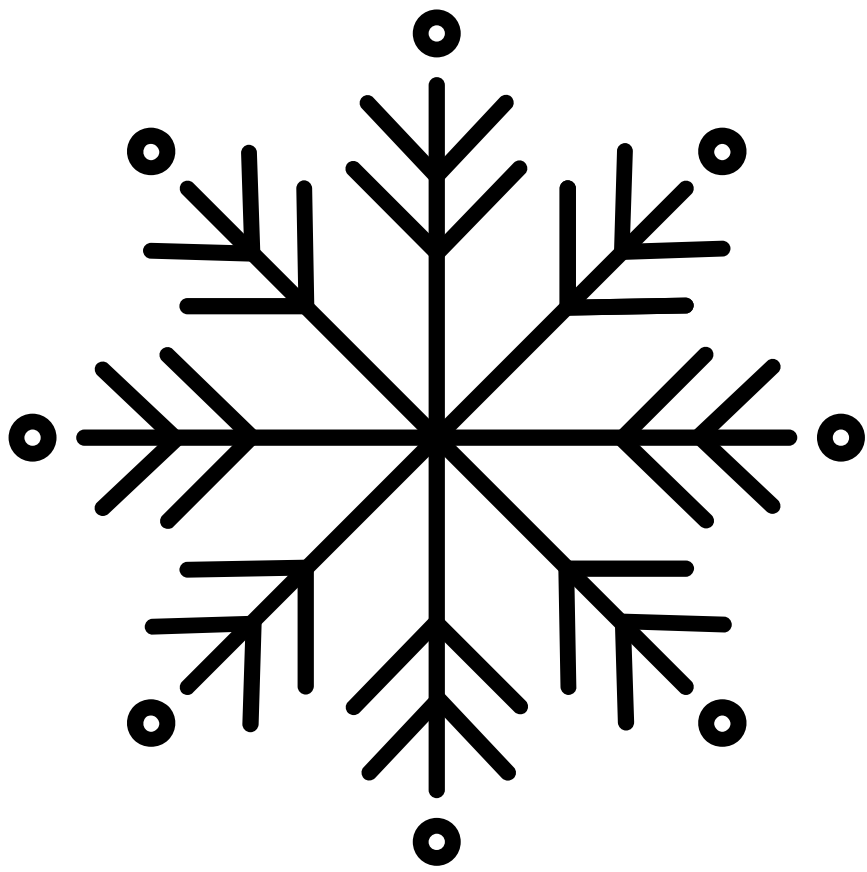
Antarctic Explorer dice game

 Firstly make the Antarctic dice. Print the template below, and use scissors to cut out along the outer edges. Use the lines as a guide to fold the shape, you will need to fold along all of the lines. Apply glue to the tabs marked with red dots, and then stick the dice together, so that the tabs are on the inside of the dice.

 Gather some warm clothes, such as coats, hats, scarfs, gloves, or jumpers. Place in a pile.

 Take it in turns to role the dice, and do the action listed on the action card

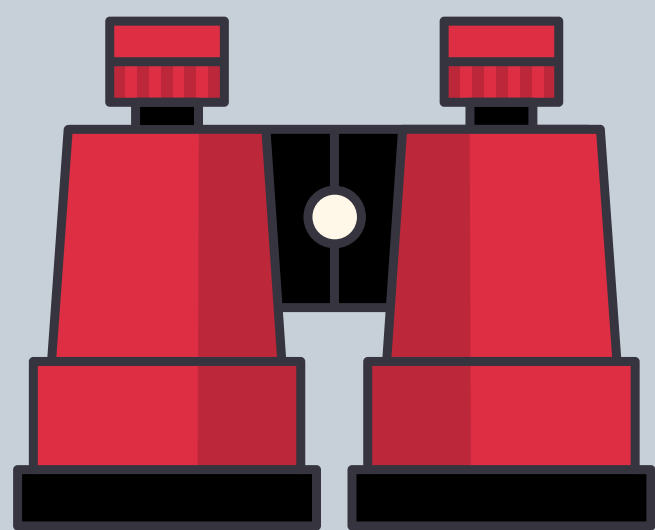






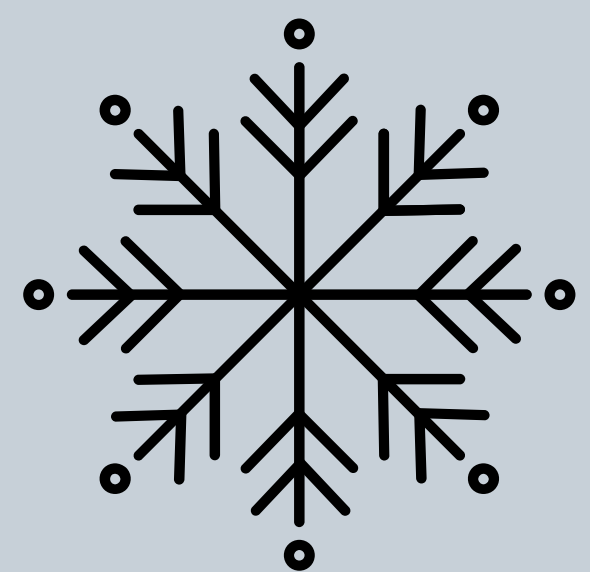
Walk like you're wading
through deep snow!

You're a penguin!
Waddle around



You're an explorer!
Search high and low

Oh no! You've frozen!
Stand still like an icicle



Wriggle on your
tummy like a seal on
a beach

Brrrr it's cold! Add an
item of clothing

